



 Alpha MOS

SENSORY ANALYSIS SOLUTIONS

IRIS Visual Analyzer

color & shape analysis

Company profile

Specialized in electronic sensing systems, Alpha MOS is positioned as the world leader in the design and development of instruments dedicated to the smell, taste and visual aspect (color and shape) analysis.

To answer the needs of major industries, Alpha MOS offers reliable and fast solutions that can control the sensory quality of their products and secure their manufacturing process.

IRIS visual Analyzer

IRIS system is composed of two elements :

- The IRIS cabinet housing the lighting camera for picture acquisition under controlled conditions
- A computer (provide by AlphaMOS) for system monitoring ,data acquisition with AlphaSoft software.



Hardware

Closeable light cabinet

- large measurement surface (270 x 390mm)
- lighting conditions
 - LED (light Emitting Diodes)-T=5700k :with dual lighting system(top and/or bottom lighting)
 - Lifetime> 40 000h
 - Very fast starting time (5min)
 - Highly reproducible
 - Back –lighting to avoid shadow effect
- removable tray diffusing a uniform light (white or black – 420 x 560mm)
- ability to exchange the base plate and choose the lighting

Imaging

- Camera
 - Embedded in the cabin for better protection
 - CMOS technology : 5 mega pixels
 - precise tunable camera 16M colors settings available from soft: software-controlled zoom
 - Resolution 2588 x 1942
 - Conformity: CE, FCC, IP30, RoHS, PoE (802.3af) , UL, GigE Vision, GeniCam

IRIS Visual Analyzer

color & shape analysis

➤ Lens

- Fixed focal (high reproducibility & robustness)
- Low geometrical distortion (lower than 0.5%)
- Manual focus and diaphragm aperture
- Several model available with focal length ranging from 4mm to 25mm (5mm in standard), depending on the minimum size to be detected and the amount of sample to be analyzed.

➤

Color calibration: computer-monitored calibration for r

- Certified color checker 24 colors. The calibration is done either on a standard calibration checker (4mm to 8mm) or on a passport –size checker(12mm to 25mm)
- White balance
- High calibration reproducibility (standard deviation <5 on 24color distances)

Application

IRIS is mainly used for the color, shape and size analysis of samples, mainly used in :

- Visual analysis of food & packaging products
- Visual monitoring of product stability and shelf life
- Comparison of visual among competing products
- Shape/material identification
- Surface analysis
- Consumer preference analysis

AlphaSoft

Compatible with Windows®7 and Windows®10. This software contains instruments control and monitoring and includes a complete chemometrics software package for data processing.

Data Analysis

- color & shape , size analysis

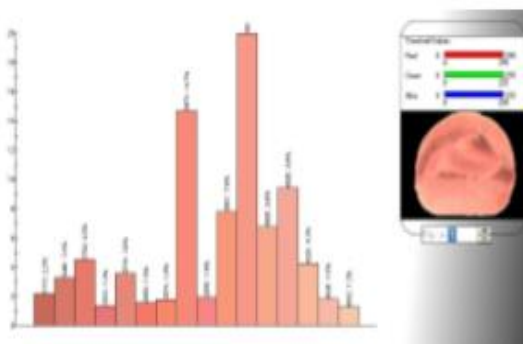


Figure 1. color analysis of ham samples

IRIS Visual Analyzer

color & shape analysis

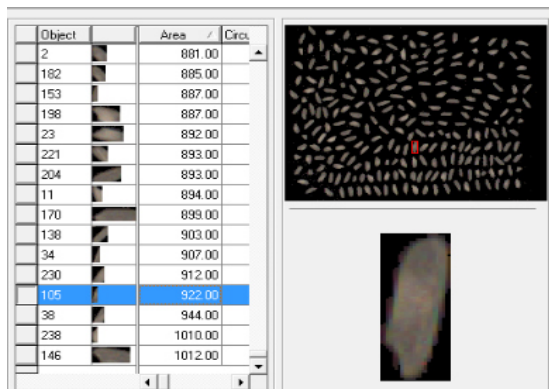


Figure 2. shape and size analysis of rice samples

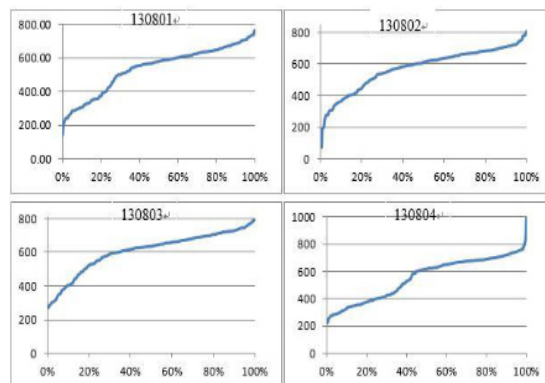


Figure 3. Distribution map of size composition of rice sample

➤ Statistics Analysis

- PCA: The software can automatically combine and screen all the information, select the characteristic fingerprint information of the sample, and objectively reflect the differences between the samples.

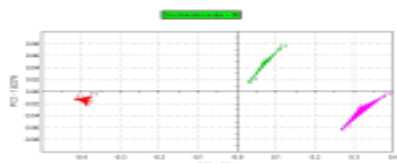


Figure 4. PCA map

- SIMCA: After training, blind samples can be qualified. Qualitative model based on Pass/Fail or Good/Bad test.

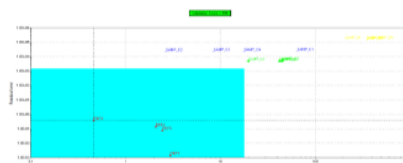


Figure 7. SIMCA map

- DFA: Classification of products based on several groups, Discrimination of various grades, origins, intensities, classes, etc.

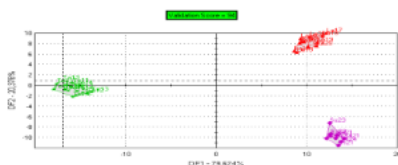


Figure 5. DFA map

- SQC: After training, blind samples can be qualified. Model for statistical monitoring of product quality and variability

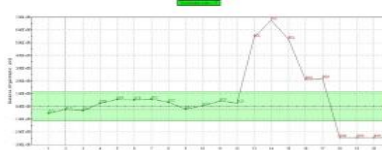


Figure 8. SQC map

- PLS: Quantitative model, can be used for concentration quantification, can also be used to correlate with human sensory panel to predict sensory score.

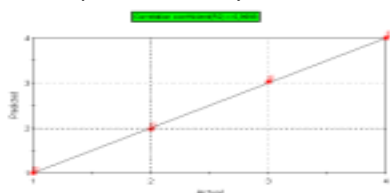


Figure 6. PLS map

- Shelflife: Mapping of the evolution of odor/taste/visual profile of products over time

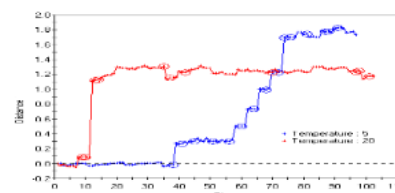


Figure 9. Shelf-life map



Polyscientific Enterprise Sdn Bhd
百利企业有限公司 152064 D

Melaka (HQ)
272, Taman Asean,
Jalan Malim,
75250 Melaka

T +606 3350690 F +606 3351631

Shah Alam
14, Jalan Serendah 26/39,
Kawasan Perindustrian HICOM,
40400 Shah Alam, Selangor

T +603 51036920 F +603 51036980

Penang
16, Jalan Sungai Tiram 7,
11900 Bayan Lepas,
Penang

T +604 6371500 F +604 6371600

Johor
No. 365 Jalan Ekoperniagaan 11,
Taman Ekoperniagaan 2,
Senai Airport City, 81400 Senai,
Johor

T +607 5955243 F +607 5998822

info@polyscientific.com.my

www.poly.my